



225 SOUTHMEAD ROAD,
BRISTOL, BS10 5DX

**GOODMAN
& LILLEY**



Communal Entrance

Accessed by upvc double glazed entrance door with stairs to first floor and main door to apartment.

Hallway

With wood effect laminated floor, loft access and doors to all rooms.

Living Area

A good sized living space with upvc double glazed window to front aspect, radiator, wood effect laminate floor, tv point, large built in storage cupboard housing the heating boiler, opening into the kitchen area which comprises wall and base units, worksurfaces over, sink unit with drainer, fitted cooker and gas hob with extractor, spaces for washing machine and fridge.

Bedroom

A double bedroom with upvc double glazed window to rear, radiator.

Bathroom

Fitted with a modern three piece suite consisting of a panelled bath with shower over off of mixer taps, low level wc, wash hand basin, tiled surrounds and floors, radiator and upvc double glazed window to rear.

Rear

The rear of the property accessed by a rear lane there is a small area with bike / general storage.

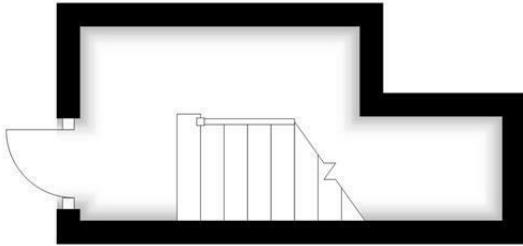
-
- Well Presented
 - First Floor Flat
 - Outside Storage Space
 - Great Location
 - Large Loft Space
 - Potential Loft Conversion



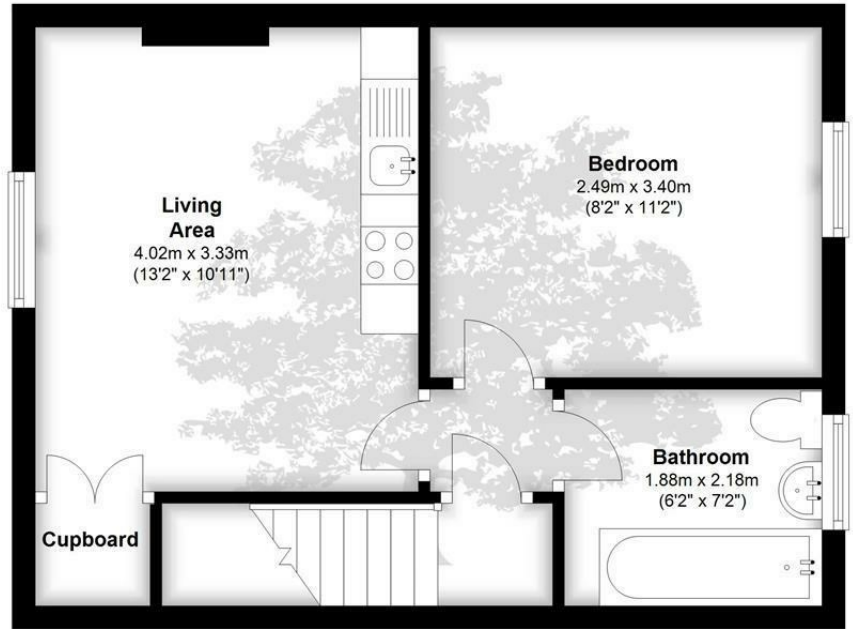
ASKING PRICE £179,000



Ground Floor



First Floor



HENLEAZE - 0117 2130777
henleaze@goodmanlilley.co.uk

PORTISHEAD - 01275 430440
sales@goodmanlilley.co.uk

SHIREHAMPTON - 0117 2130333
shire@goodmanlilley.co.uk

Zoopa.co.uk

rightmove



WWW.GOODMANLILLEY.CO.UK

These particulars are for general guidance only. They do not form or constitute any part of an offer or contract. Goodman & Lilley has not carried out structural surveys of the property. The services, appliances or specific fittings mentioned in these details have not been tested. Every attempt is made to ensure accuracy, however all photographs, measurements, floor plans and distances are for illustrative purposes only. They must not be relied upon when purchasing carpets and or other fixtures & fittings. Lease details, service charges and ground rents are given as a guide only. They should be checked and confirmed by a licensed solicitor prior to exchange of contracts. The copyright of all details, photographs and floor plans remain exclusive to Goodman & Lilley.